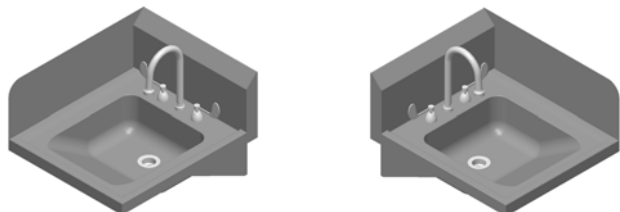


HAND SINKS
DH-23, DH-24, DH-25
(With Splash & Low-Lead Faucet)

PROJECT#: _____

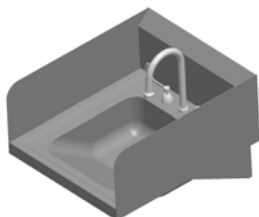
ITEM# _____

MODEL# _____

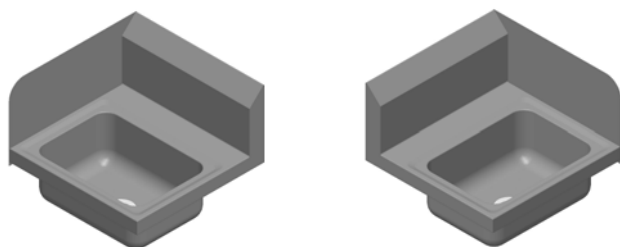


DH-23L
* ADA Hand Sink

DH-23R
* ADA Hand Sink

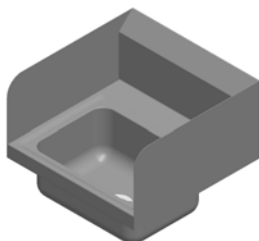


DH-23D
* ADA Hand Sink

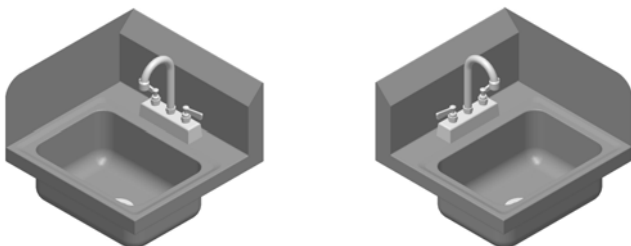


DH-24L

DH-24R



DH-24D



DH-25L

DH-25R



DH-25D

Low Cost Solutions for Back Room Operations:

- ◆ Supermarkets
- ◆ Convenience Stores
- ◆ Hospitals
- ◆ Factories

Features:

- ◆ Constructed from Heavy Gauge Type 304 Series Stainless Steel
- ◆ Available through the Amtekco Quick Ship Program
- ◆ All Sinks are N.S.F. Listed
- ◆ Multiple Designs for Multiple Applications

Mechanical Specifications:

- ◆ Meets "Low Lead" or "Lead-Free" Faucet Specifications
- ◆ Sink Bowl is 13-3/4" x 9-3/4" x 5-3/4"
- ◆ ADA Sink Bowl is 14" x 16" x 5-7/8"
- ◆ Crumb Cup Drain 1-1/2" NPS
- ◆ Faucets 1/2" NPS
- ◆ Refer to back of sheet for individual mechanical specifications

MODEL#	SPLASH LOCATION	SHIPPING WEIGHT
DH-23L	LEFT	14 lbs.
DH-23R	RIGHT	14 lbs.
DH-23D	LEFT & RIGHT	15 lbs.
DH-24L	LEFT	17 lbs.
DH-24R	RIGHT	17 lbs.
DH-24D	LEFT & RIGHT	18 lbs.
DH-25L	LEFT	18 lbs.
DH-25R	RIGHT	18 lbs.
DH-25D	LEFT & RIGHT	19 lbs.

All Models Can Be Shipped U.P.S.

Amtekco offers a full line of standard hand washing sinks to satisfy every requirement and the most rigorous local sanitation requirements. These superior products feature type 304 stainless steel throughout for long life, ease in cleaning and low maintenance. Rugged, heavy gauge, die stamped and welded construction provides for rigid wall mounting for years of trouble free use. All faucets are N.S.F. listed.

Models are in stock for immediate shipments



